

Alegria Saturnalia

In the spirit of the festive winter solstice, Malou Aranceta-Romero's spellbinding creations bring sparkle to the year's most celebrated season

By GLO GAMBOL • Photography JOHN OCAMPO

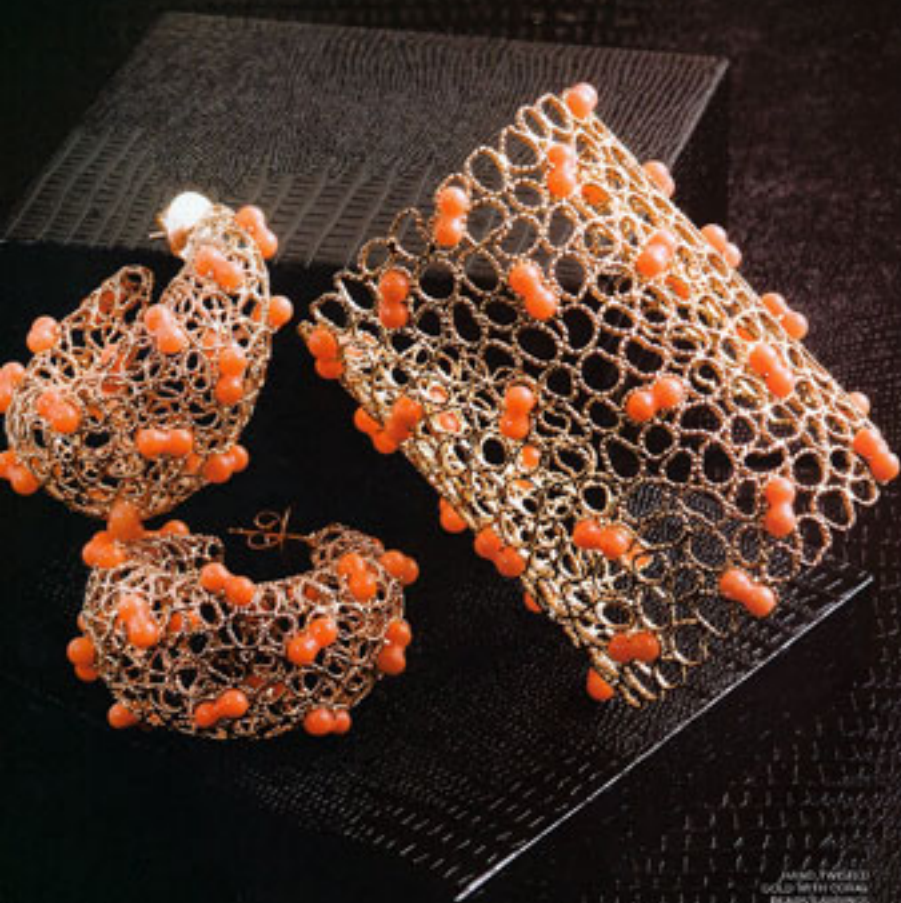




WHITE BRANCH-
INSPIRED NECKLACE AND
MATCHING EARRINGS WITH
AQUAMARINE, PEARL, AND
AQUAMARINE CABOCHON

SPRING FOR
TURQUOISE AND BLUE
SAPPHIRE RING AND
EARRINGS SET, WHITE OVAL
AND GREEN EMERALD RING
AND EARRINGS SET





ARMED, FRESH!
GOLD WITH CORAL
BEADS, LAMING
AND CUFF SET

SOOTHY SEA PEARL
NECKLACE WITH
WANG CARVED
GOLD TUBE BEADS
OVAL, THYQUOSE
CAROCHON, BLUE
SAPPHIRE AND
DANG PROTECT BY AIR
TANER'S CARRIAGE

From top to bottom:
ROUND SMOKY
QUARTZ AND
RUBY STUD WITH
DETACHABLE ROSE
QUARTZ DROP
EARRINGS, GREEN
TOURMALINE AND
GREEN TOPAZ STUD
WITH DETACHABLE
SMOKY QUARTZ
DROP EARRINGS,
CLEAR TOPAZ, GREEN
SAPPHIRE AND HAND
CARVED GREEN
AMETHYST EARRINGS,
SMOKY QUARTZ,
YELLOW SAPPHIRE
AND HAND CARVED
QUARTZ
EARRINGS

Yellow and
hand carved Ruby,
Yellow Sapphire
and Rose Quartz
Long Train
Necklace with
Matching Earrings





WHERE TO GET IT
HAZU ABANETA,
BOMBO PHOTO (972)
830-0881 OR VISIT
WWW.JOANIQUE.COM